

ÉTAGE 3

T3

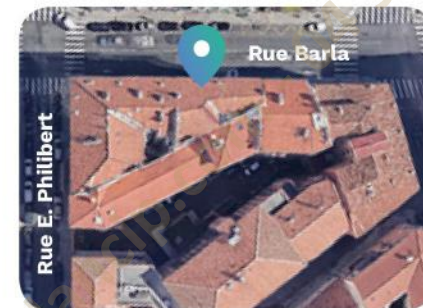
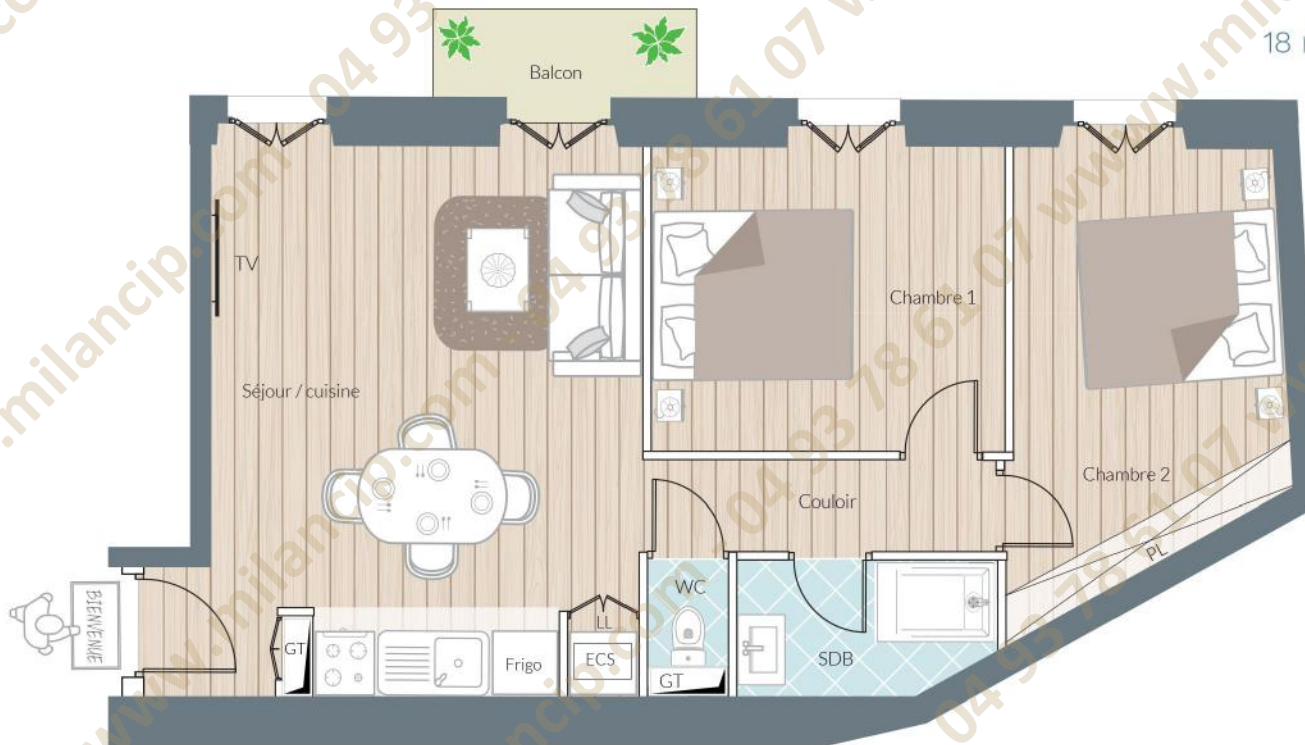
Lot 33

PROPOSITION D'AMÉNAGEMENT
surfaces indicatives après travaux

Séjour/cuisine	23,50 m ²
Chambre 1	10,40 m ²
Chambre 2	10,70 m ²
Couloir	3,56 m ²
Salle de bains	3,10 m ²
WC	1,10 m ²

Surface 52,36 m²

Surface balcon 1,98 m²



18 rue Barla - 06300 Nice

